



## CITY OF PACIFIC GROVE

300 FOREST AVENUE  
PACIFIC GROVE, CALIFORNIA 93950  
TELEPHONE (831) 648-3100 • FAX (831) 375-9863

### NOTICE OF PUBLIC MEETING

## TRAFFIC SAFETY COMMISSION PINE AVENUE BIKEWAY: STRIPING AND POTENTIAL INTERSECTION RECONFIGURATION

DATE & TIME: Tuesday September 7, – 5:45 P.M.  
LOCATION: Community Center, 515 Junipero Avenue

#### MEETING AGENDA

1. Call to Order
2. Oral Communications (*Comments from the audience will not receive Traffic Commission action at this meeting. Comments must deal with matters subject to the jurisdiction of the Traffic Commission and will be limited to three minutes. Whenever possible, letters should be submitted to the Commission in advance of the meeting.*)

#### 3. NEW BUSINESS:

A. Discuss the proposed bikeway plan for Pine Avenue. The conversion includes two through lanes (instead of four), two bicycle lanes, and parking on each side.

**Recommended action:** *Discussion and feedback to staff on questions/issues*

B. Discuss potential traffic control improvements for the intersection of Pine Avenue and Forest Avenue. Options could include keeping the existing traffic signals, a four-way stop, roundabouts, or other traffic calming strategies.

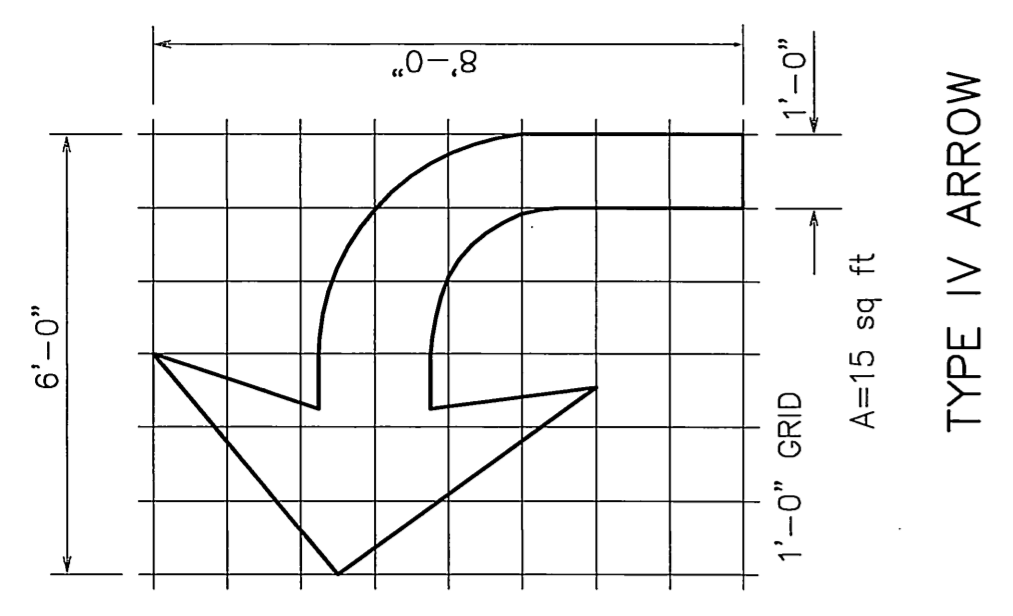
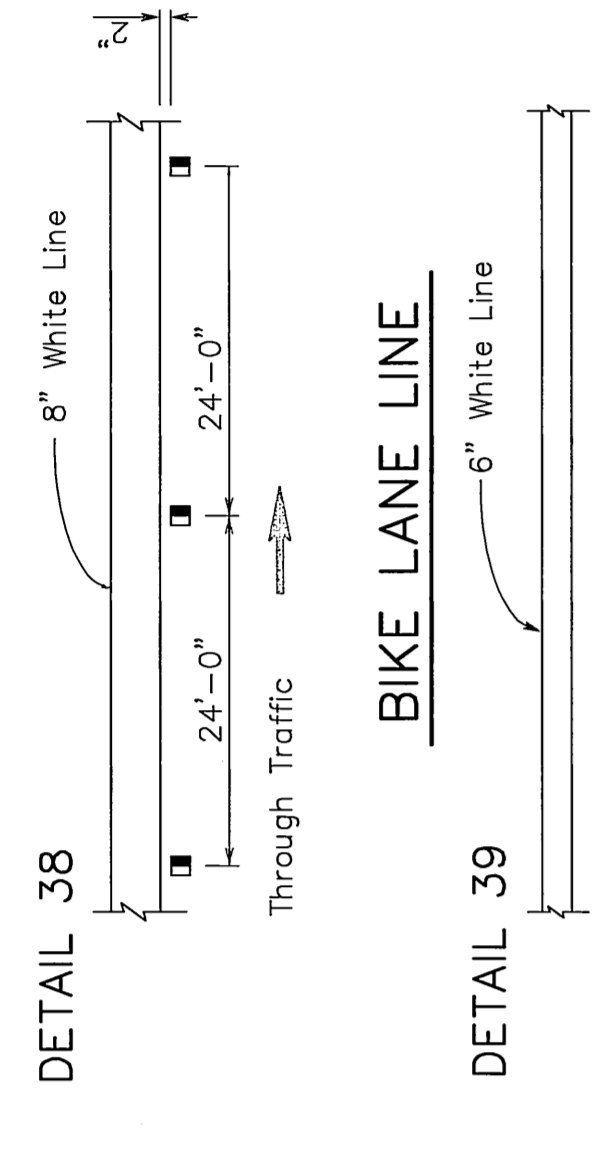
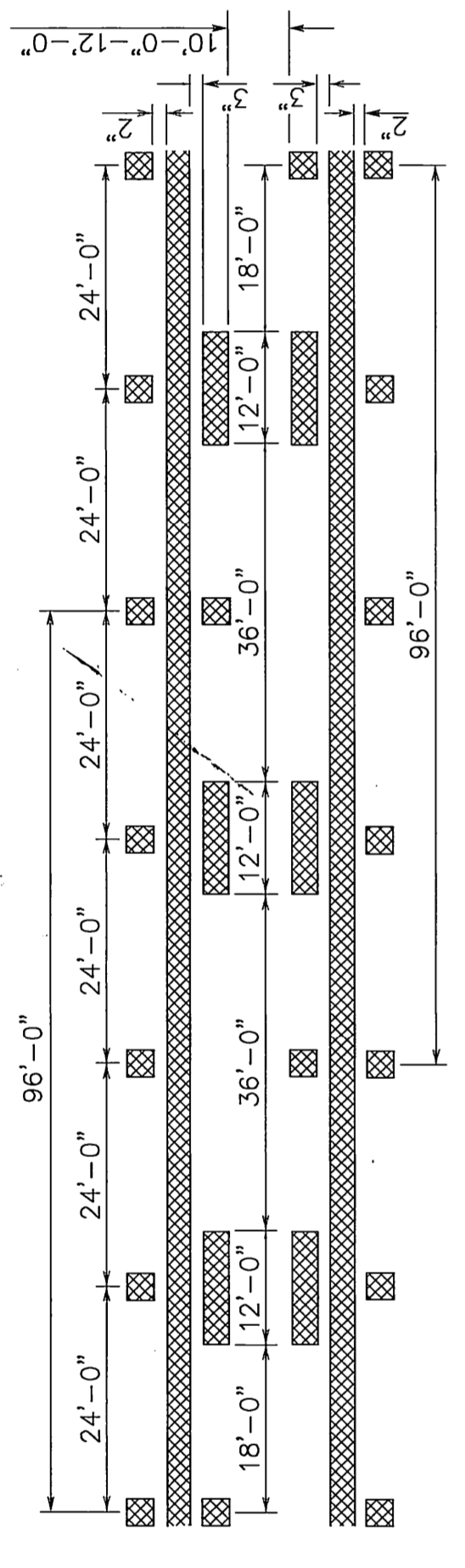
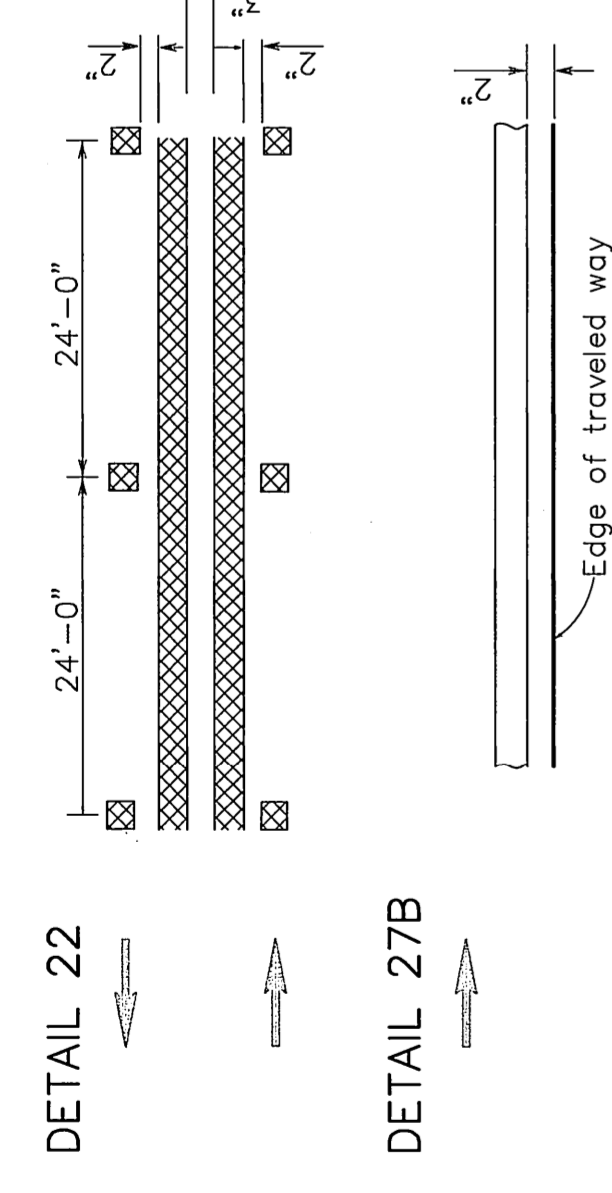
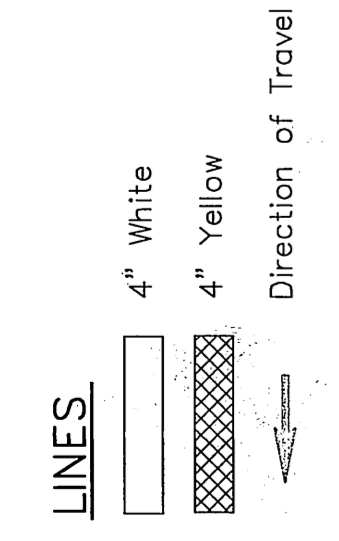
**Recommended action:** *Discussion and feedback to staff on questions/issues to be addressed in subsequent traffic engineering studies and subsequent public meetings.*

#### 4. ADJOURNMENT

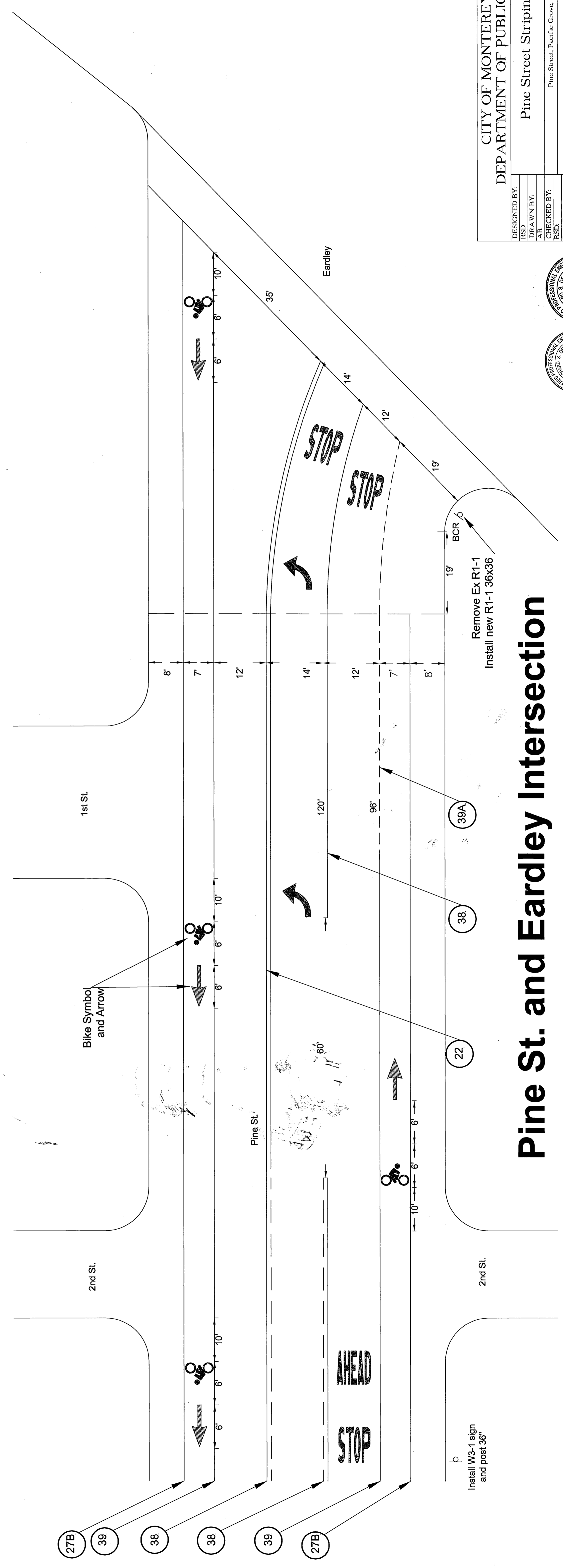
*This meeting is open to the public and all interested persons are welcome to attend. The City of Pacific Grove does not discriminate against individuals with disabilities and meetings are held in accessible facilities.*

---



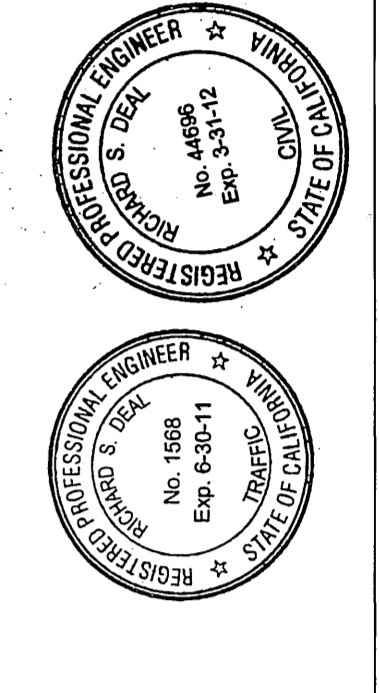


**CALTRANS STANDARD PLANS - DETAILS**  
**MAY 2006 - NTS**



**Pine St. and Eardley Intersection**

DESIGNED BY:	RSJ
DRAWN BY:	AR
CHECKED BY:	RSJ
DATE:	August, 2010
SCALE:	1"=30'
SHEET:	2 OF 2
CAD DWG NAME:	R2/pine st. dwg
APPROVED:	<i>[Signature]</i>
CITY TRAFFIC ENGINEER	44696
REGISTERED No.	8-5-2010
DATE	
PROJECT NAME:	Pine Street Stripping Plan
Pine Street, Pacific Grove, CA	





## FACT SHEET

### PINE AVENUE & FOREST AVENUE INTERSECTION

1. The intersection was signalized in 1970 +/-
2. One of the options at the intersection is to remove the existing traffic signal system.
3. The Federal Government's Manual of Uniform Traffic Control Devices (MUTCD) and the California's supplement to the MUTCD have specified requirements for the removal of Traffic Signals.
  - a. They require that a professional study be made regarding the traffic signal removal to determine if the warrants for removal are met. Cost of the study is \$6,000 +/-.
  - b. The removal cost includes removing all wire from conduits, removing and recycling all signal standards and equipment, removing all foundations above & below ground, replacing all sidewalks, handicap ramps, etc and remove all control equipment and electrical service.
  - c. Two received verbal estimates for the removal, one from Hatch Mott MacDonald, Consulting Traffic Engineers and the other from Republic ITS who performs the City's Traffic Signal Maintenance. Their estimates for removal were \$60,000, both representatives said the quotes were conservative.
4. Several Studies at this intersection in regards to traffic signals have been conducted:
  - a. In 2002, I conducted a study and the Traffic Signals were warranted.
  - b. In 2005, I conducted another study and the results were marginal.
  - c. In 2007, myself and Hatch Mott MacDonald (formerly Higgins Assoc) conducted a study and the results were marginal.

The 2007 study indicated the following:  
331 pedestrians used the intersection during the study time.  
The average daily traffic entering the intersection was 11,554 vehs/day  
From 01/01/2000 – 12/31/2009 there were 23 vehicle accidents.  
The twenty three accidents included 3 pedestrians who were injured.
5. Forest Avenue is a walking route for two schools:  
Robert Down Elementary School  
P. G. Middle School
6. In 1007 it should be noted that the City of Pacific Grove updated the signalized intersection of Forest Avenue and Pine Avenue at a cost of approximately \$13,000.00. All yellow incandescent bulbs were replaced with LED's. All 8" mast arm signal heads were replaced with 12" signals. All existing signalized pedestrian heads, four (4), were replaced with LED countdown signals. Four new pedestrian LED countdown signal heads with framework were added. All new yellow pedestrian pushbuttons were installed.
7. Records were researched and the following was noted:  
PG&E electrical charges at this intersection the past 8 months were \$39.52/month  
Republic ITS Electrical Contractor, who maintained the intersection the past 8 months, the charges were \$ 103.84/month