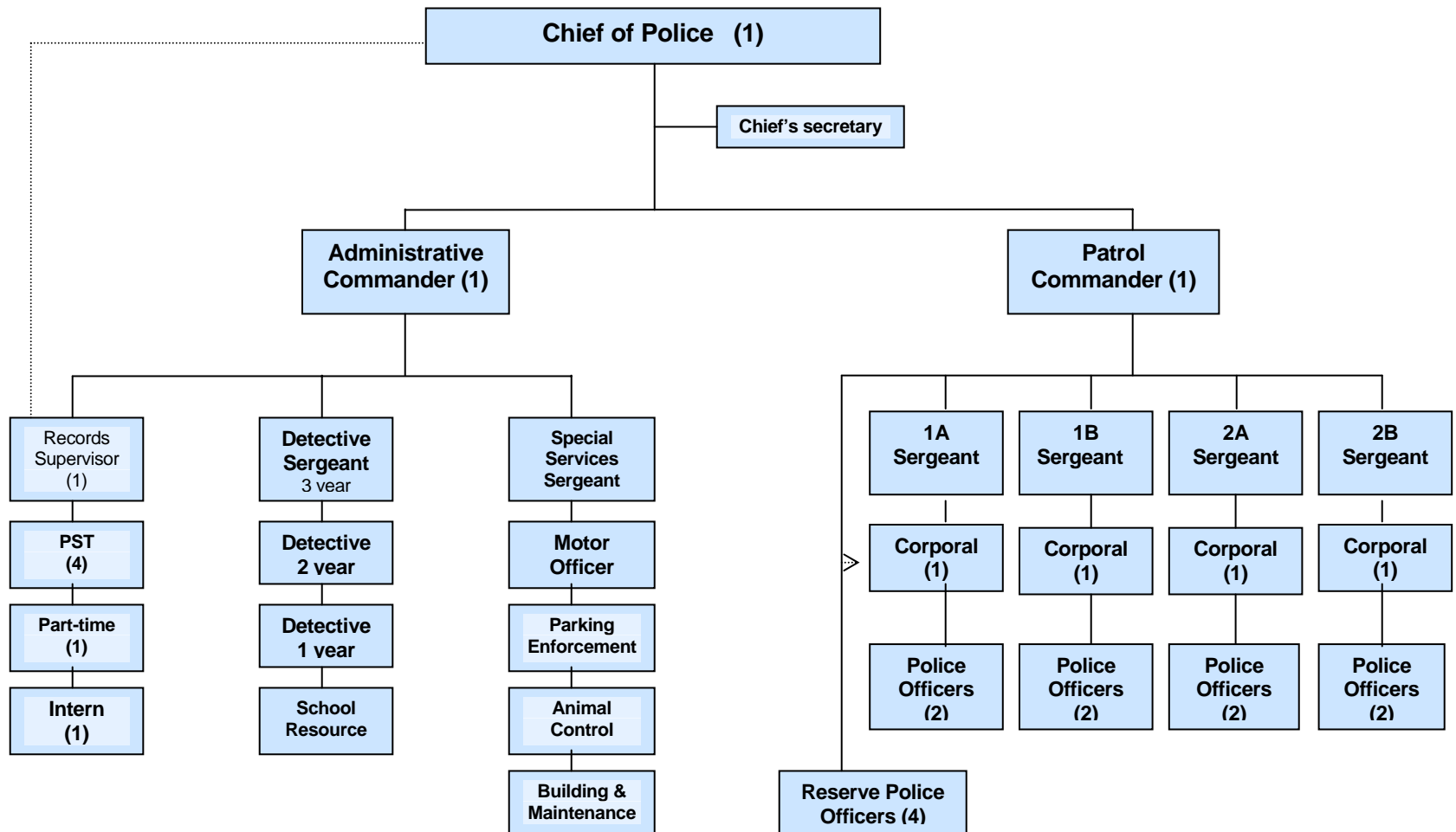


PACIFIC GROVE POLICE DEPARTMENT DRAFT ORGANIZATION STRUCTURE FOR 2007/ 2008



| Non-Sworn Personnel | |
|---------------------------------------|------------|
| Records Supervisor | 1 |
| Police Services Technician | 4 |
| Chief's Secretary | 1 |
| Part-time PST (or intern) | .5 |
| Animal Control | 1 |
| Parking Enforcement | 2 |
| Building & Maintenance (public works) | |
| Total non-sworn | 9.5 |

| Sworn Personnel | |
|--------------------------------|-----------|
| Chief of Police | 1 |
| Division Commanders | 2 |
| Sergeant in charge of platoons | 6 |
| Detectives | 2 |
| School Resource | 1 |
| Corporals | 4 |
| Motor Officer | 1 |
| Officers | 8 |
| Total sworn | 25 |